

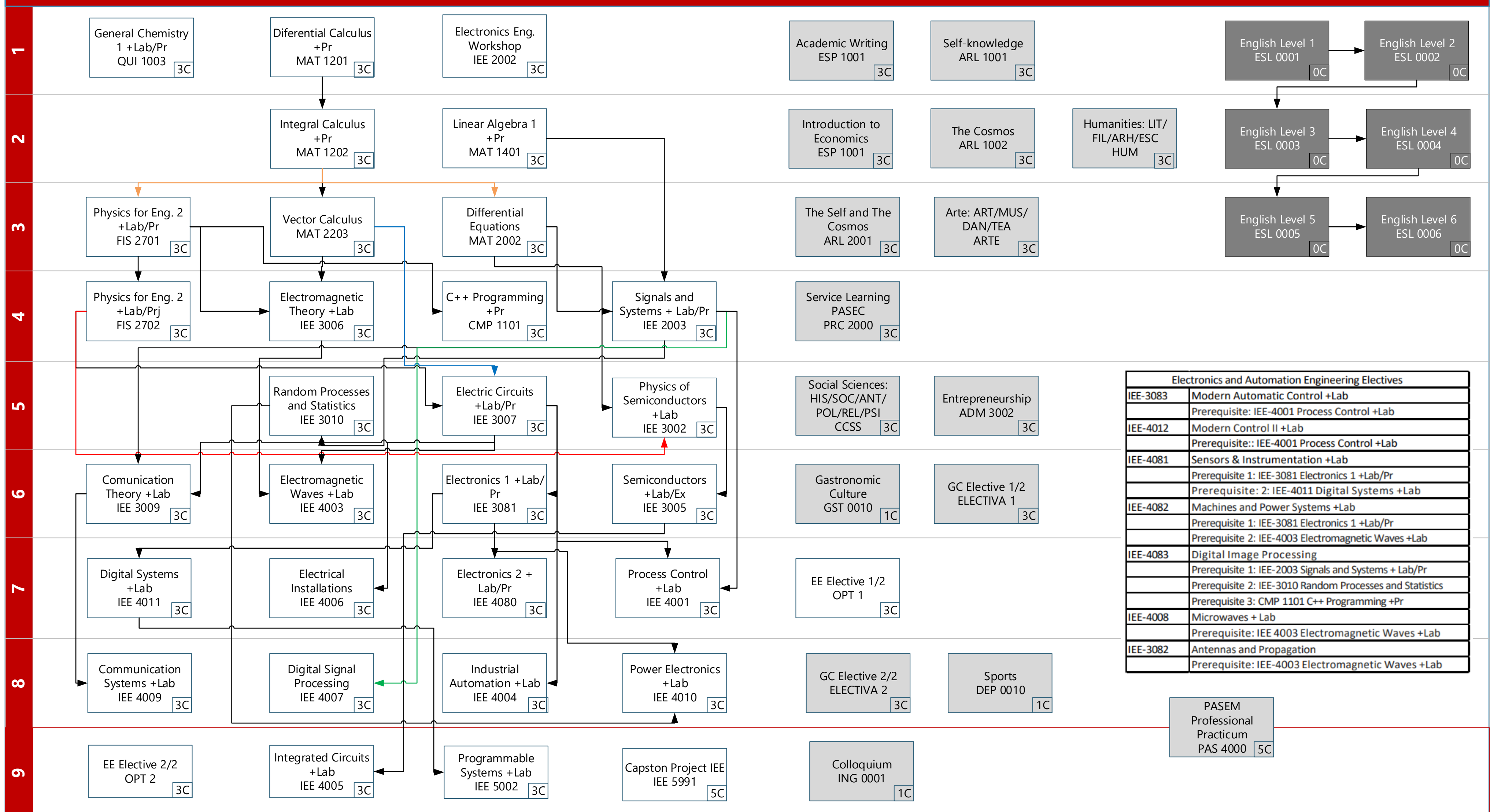
* **Ej** La clase tiene una sección de ejercicios
 ** **Lab** La clase tiene una sección de laboratorio
 *** **C** Número de créditos por clase

□ Colegio General de Artes Liberales
 ■ Idiomas - 0 créditos

- Nota:**
- 3 Créditos equivalen a 144 horas
 - Las clases con 0 créditos son requeridas para la graduación
 - La clase PAS 4000 – Práctica Pre-profesional PASEM Debería tomarse en el último verano antes de graduarse
 - El estudiante también debe registrarse en al menos una clase impartida en inglés, de la carrera o de colegio general
 - The student must pass any course with the 'Writing Intensive' attribute (Prerequisite: English Level 6)

Universidad San Francisco de Quito

ELECTRONICS AND AUTOMATION



Electronics and Automation Engineering Electives	
IEE-3083	Modern Automatic Control +Lab
	Prerequisite: IEE-4001 Process Control +Lab
IEE-4012	Modern Control II +Lab
	Prerequisite: IEE-4001 Process Control +Lab
IEE-4081	Sensors & Instrumentation +Lab
	Prerequisite 1: IEE-3081 Electronics 1 +Lab/Pr
	Prerequisite 2: IEE-4011 Digital Systems +Lab
IEE-4082	Machines and Power Systems +Lab
	Prerequisite 1: IEE-3081 Electronics 1 +Lab/Pr
	Prerequisite 2: IEE-4003 Electromagnetic Waves +Lab
IEE-4083	Digital Image Processing
	Prerequisite 1: IEE-2003 Signals and Systems + Lab/Pr
	Prerequisite 2: IEE-3010 Random Processes and Statistics
	Prerequisite 3: CMP 1101 C++ Programming +Pr
IEE-4008	Microwaves + Lab
	Prerequisite: IEE 4003 Electromagnetic Waves +Lab
IEE-3082	Antennas and Propagation
	Prerequisite: IEE-4003 Electromagnetic Waves +Lab

* Pr The class has a problem solving section
 ** Lab The class has laboratory
 *** C Number of credits per class

General Curriculum Classes
 Languages - 0 credits

- Note:**
- 3 credits are equivalent to 144 hours
 - Classes with 0 credits are required for graduation
 - The class PAS 4000 – Professional Practicum PASEM should be taken on the last summer before graduation.
 - Students must also register for one course taught in English, either from their major or a general curriculum class.
 - The student must pass any course with the 'Writing Intensive' attribute (Prerequisite: English Level 6)